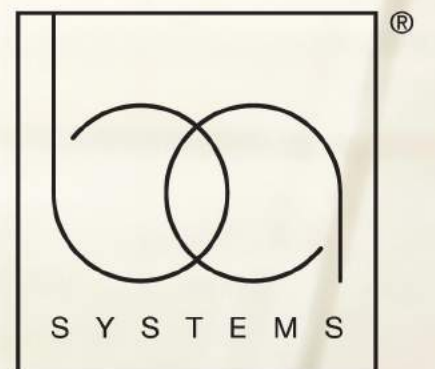


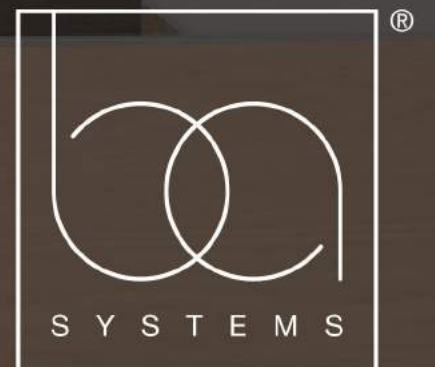
B40

Frameless Glass

Enjoy uninterrupted views with
this minimalistic all glass solution



“Over the past 20 years, BA Systems has redefined the design, manufacture & installation of glass balustrade systems. By streamlining our products and project processes, we have been able to significantly improve our service. We can consistently offer short lead-times to meet changes in programme, along with rapid, hassle-free installation.”



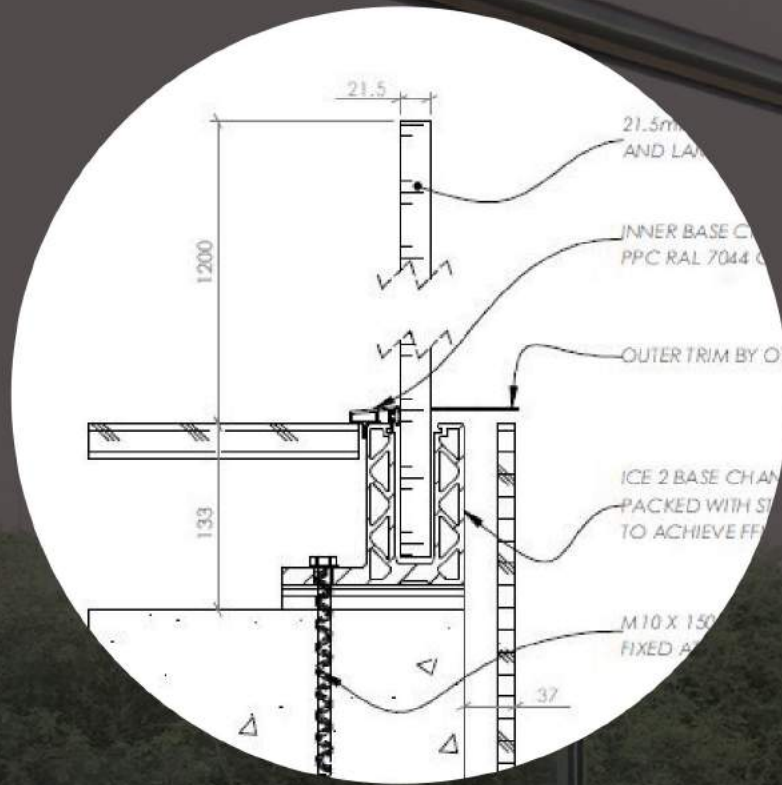
FEATURES

B40 Frameless Glass

- Provides effective, appealing edge protection
- Minimalistic design maximises views and sunlight – no vertical supports or visible fixings
- Complementary handrail and trim detail enhances the architecture
- Variety of options of handrails, glass thicknesses and base trims
- Versatile base fixing integrates easily with other base details
- Suitable for a project with short lead times



B40 FRAMELESS GLASS



Design



Manufacture

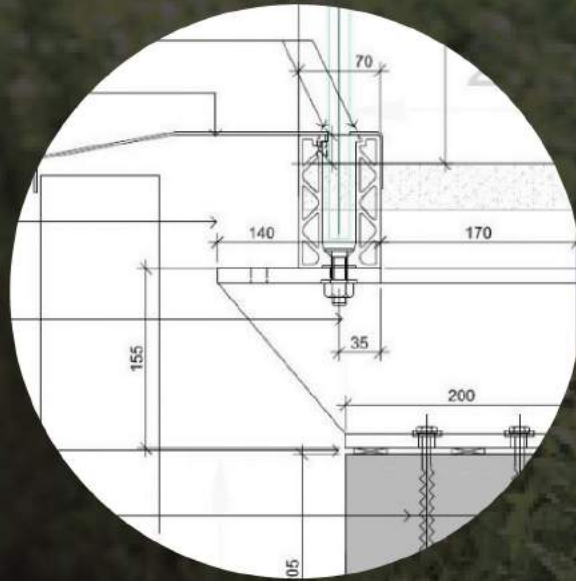


Install

BA Systems provides the complete beginning-to-end service that Developers, Architects & Main Contractors require for including frameless glass on their projects. This includes assistance with the initial conceptual design and then developing the design to ensure the balustrade integrates with all associated trades. This carries through to the final site surveys, followed by the provision of full manufacture drawings and then on to completion of manufacturing in our own workshops - with the final, snag-free and on time installation.



Technical Features of the B40 Balustrade System.



Integration with other trades

With the various designs of different base channel and finishing trims that BA Systems have developed over the years, B40 can be adapted to fit in with the majority, if not all building systems and finishes.



Waterproofing

The base extrusions in System B40 are designed to integrate with waterproofing systems, complementing a waterproofing strategy.



Protection

B40 can be fitted early on in the project then carefully wrapped and protected from damage during construction. This can then form the temporary edge protection while other floor and internal works progress.

Base Channels and Finishing Trims.



Ice™ 1

Surface mounted base channel for fixing glass balustrades below or above the finished floor levels. Can be mounted to concrete or steel edges or bespoke steel brackets to integrate with existing edge details.



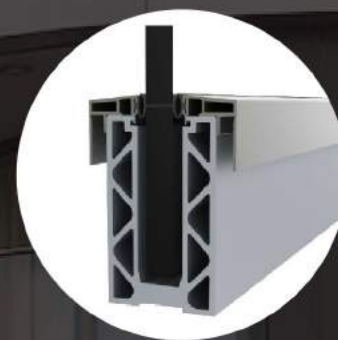
Ice™ 2

Offset mounted base channel for surface fixing glass balustrades to balcony edges in concrete or steel. Channel can be concealed below finished floor levels and is used extensively where balustrades are mounted close to edges of balconies.



Ice™ 3

Side mounted base channel that provides an alternative fixing method, maximising floor space. Channel is usually side mounted to concrete or steel balconies or parapet walls and is concealed with cover trims or within the wall and insulation build up.



B40 Finishing Trims are manufactured in aluminium, and can be powder coated to any colour required or alternatively, anodised. If required, a bespoke aluminium or folded stainless steel trim can be utilised.

TECHNICAL DETAILS

Handrails



Stainless Steel Slotted

48mm diameter stainless steel slotted handrails, top mounted to glass balustrades with appropriate gaskets.



Stainless Steel Offset

42mm or 50mm diameter stainless steel handrails, offset mounted to the glass at 900mm height above finished floor level.



Low Profile Capping

Low profile satin aluminium capping top rail to glass.



Legacy™ Round Offset

42mm diameter Legacy™ finish antique bronze handrails, offset mounted to the balustrades.



Legacy™ Square Slotted

50 x 30mm rectangular slotted Legacy™ finish antique bronze handrails, mounted to the top of the glass.



Legacy™ Square Offset

50 x 30mm rectangular Legacy™ finish antique bronze handrails, offset mounted to the glass.



Hardwood Offset

50mm diameter hardwood handrails offset mounted to the glass at 900mm height above finished floor level.



No Handrail

Toughened & laminated or toughened glass with no horizontal top rails.

B40 IN USE - GMV

NAME - GMV Phase 1

SECTOR - Residential

LOCATION - Greenwich

ARCHITECT - Jestico + Whiles

CONTRACTOR - Willmott Dixon Housing Ltd

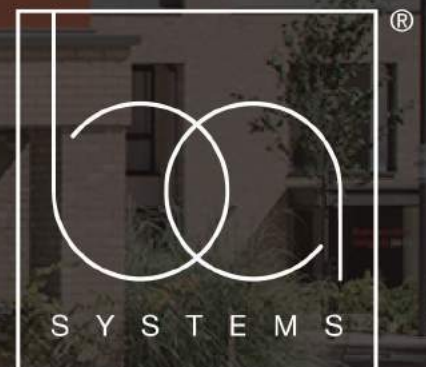
CONTRACT VALUE - £40M

BALUSTRADE VALUE - £850K

The Greenwich Millennium Village is a joint venture development by Countryside Properties and Taylor Wimpey. This phase of the Greenwich Peninsula development has delivered 206 private, shared ownership and affordable rent homes in residential blocks, and includes a mixture of 1,2 and 3 bedroom apartments. BA Systems were commissioned by Willmott Dixon to provide our B40 Frameless Glass balustrade to the external terrace and balcony areas.

Contractor Testimonial

"Well done Antony and your team. Has been a pleasure working with you and your company. Well done!!" – Bledar Bleca, Building Manager



NAME - 73 Great Peter Street

SECTOR - Residential

LOCATION - Westminster

ARCHITECT - White Ink Architects

CONTRACTOR - McAleer & Rushe

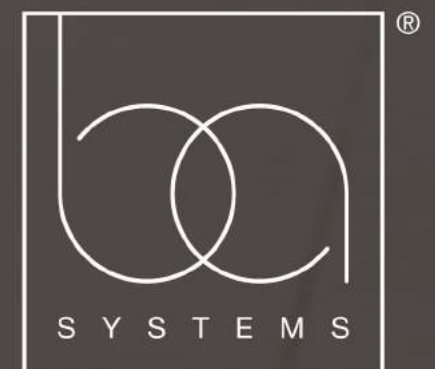
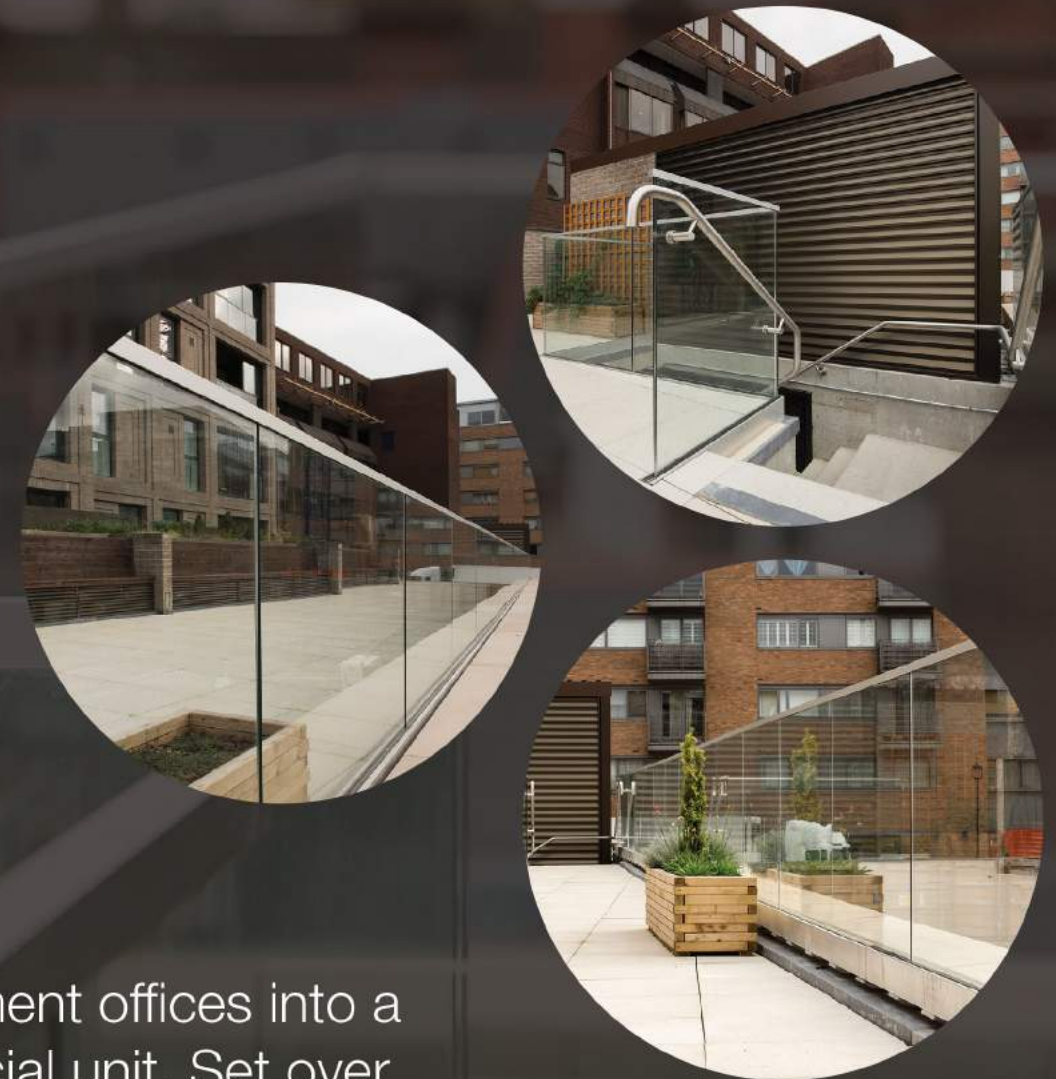
CONTRACT VALUE - £7M

BALUSTRADE VALUE - £110K

The 73 Great Peter Street project has transformed the site of former government offices into a development of 22 luxury modern apartments, 2 penthouses and 1 commercial unit. Set over seven floors, this project offers magnificent views, new and old, taking in the likes of Big Ben, the London Eye, The Shard, and Canary Wharf. The BA Systems solution provided a modern look to the upper penthouses with the B40 Frameless Glass System.

Contractor Testimonial

“BA Systems provided us excellent design support from an early stage and helped us overcome a number of challenges on this project – the final project looks great and perfectly complements the high level of finish throughout the building” – Ciaran Tiffney, Project Manager



BA SYSTEMS BRIEF OVERVIEW

Balustrade Systems for the construction industry.

Over the past 20 years, BA Systems has redefined the design, manufacture, installation of glass balustrade systems. By streamlining our products and project processes, we have been able to significantly improve our service. We can consistently offer short lead-times to meet changes in programme, along with rapid, hassle-free installation.

Our balustrades are categorised into 4 systems. Each system has a range of options to suit your project.

B10

WALL-MOUNTED HANDRAIL



Complementary handrails, designed to coordinate with our balustrade systems.

[VIEW B10 ONLINE](#)

B20

POST & INFILL



Highly versatile stair and balcony handrail system, with many finishes & infill options.

[VIEW B20 ONLINE](#)

B30

FRAME & INFILL PANEL



Innovative framed balcony and interfacing system, with concealed fixing.

[VIEW B30 ONLINE](#)

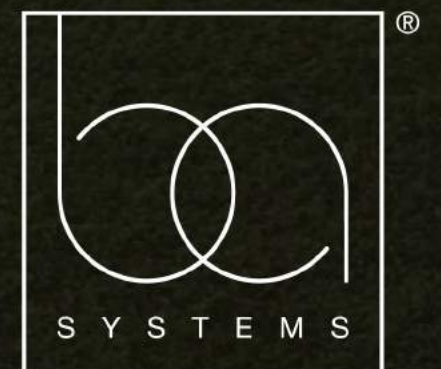
B40

FRAMELESS GLASS



Enjoy uninterrupted views with this minimalist, all-glass solution.

[VIEW B40 ONLINE](#)



Getting the design right as early as possible in a project ensures success for all parties involved.

Step one

INITIAL DESIGN REVIEW

At the initial pre-order stage, a detailed design review is completed to ensure all parties understand and agree on the overall concept – this ensures our proposals meet all requirements.

Step two

DESIGN DEVELOPMENT

We collaborate with all parties involved in a project, to develop the design and successfully meet all requirements. Our CAD facilities enable us to offer 3D visuals to ensure clarity - this process facilitates the approval process and saves valuable project time.

Step three

SURVEY & MANUFACTURE DRAWING

When the site is fully ready, we survey all relevant areas and provide detailed manufacture & installation set out drawings. These are based on the site's dimensions and all previously agreed elements. A final copy of these are submitted to our clients for their records.

Construction programmes are constantly changing. To ensure we fully meet our clients' needs, we have spent the last 12 months further streamlining all of our processes - from initial site survey and design & drawing, through to our manufacturing and site installation procedures. This means we have improved our service level and at the same time, more than halved our average lead-time from 12 weeks to less than 6 weeks.

1. We are more **flexible** - we can accommodate changes in programme, "We're ready, when you are ready for us"
2. We are **reliable** - we consistently meet our client's final agreed installation dates.
3. We carry out **rapid** installation - the installation of our products is completed in remarkably short time on site.
4. We aim to achieve **no hassle** - With BA's management pro-actively working closely with our clients project management team, we do all we can to assist them with smooth & snag free completions.



GET IN TOUCH

We have successfully achieved accreditation from, and are fully compliant with the following regulatory bodies:



Contractors Health and Safety
Assessment Scheme (CHAS)



**BUILDER'S
PROFILE**

Collaboration and sharing of
PQQ information



BSI – in the use of industry-
respected best practices



Constructionline

A government run scheme to regulate
health & safety standards



SMAS health & safety
membership organisation



Construction Skills Certification
Scheme (CSCS)

**DOWNLOAD ALL BA SYSTEMS
ACCREDITATIONS HERE**

The balustrade system specialists™

01603 722330

sales@basystems.co.uk

www.basystems.co.uk

BA Systems is a registered
trademark of Brass Age Ltd.

For more information about our products or to
discuss your project, please contact us today:

GET IN TOUCH ONLINE

A selection of some of the companies we have partnered with:



**MORGAN
SINDALL**



mace

**CARTER
BUILDER**

WILLMOTT DIXON

Wates

COUNTRYSIDE
Places People Love



Higgins

VINCI



Balfour Beatty

bam

FARRANS

UK FACADES LTD

